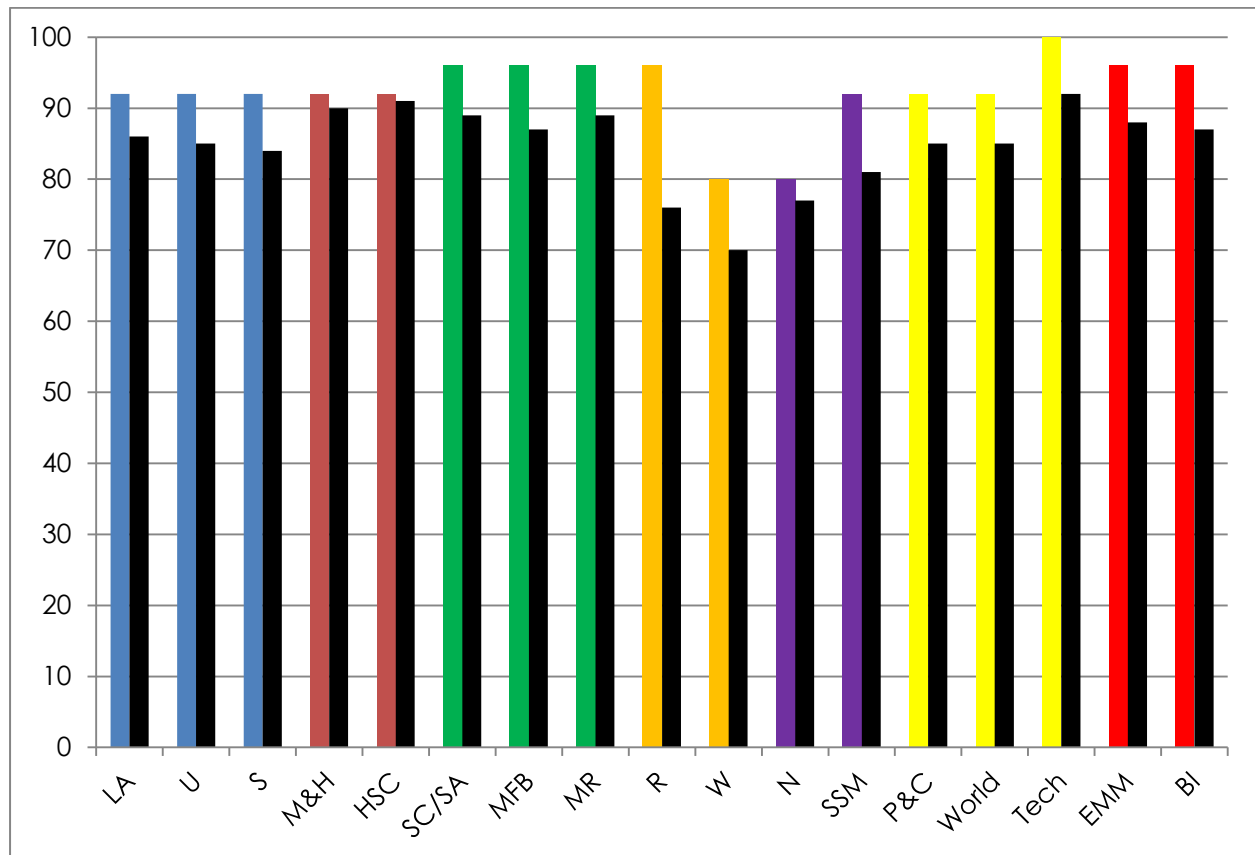


# EYFS Profiles

## Comparison with National results



Mayfield
  National

## Good Level of Development

Children are defined as having reached a good level of development at the end of the EYFS if they have achieved at least the expected level in:

- the early learning goals in the prime areas of learning (personal, social and emotional development; physical development; and communication and language)
- the early learning goals in the specific areas of mathematics and literacy.

	Mayfield	National
2015-16	83%	66%